



**EURIAL**  
Fuelling your business





# Steel Tanks

## ► Technical data

- manufacturing certificate according to the European standard EN 12285-1 (for underground ones), EN 12285-2 (for above-ground, double-walled);
- products in different sizes, from 1000 l (1 cubic meter) to 120,000 L (including intermediate sizes);
- 6 regular diameters available (from 125 cm to 300 cm); any size available at clients request and for any individual needs.
- multiple tank equipment options;

## ► Multiple options

- choosing the RAL colors of the tank + the possibility of logo printing;
- retention tank of different sizes for single-walled tanks;
- the option of installing different equipments;
- additional manholes (for certain tanks);
- additional aluminum ladder, galvanized steel platform;
- prefabricated pipes;
- measuring systems (mechanical, electrical, electronic);

## ► Certificates

• The tanks are executed in quality-environment-health management system applied and certified according to the standards ISO 9001: 2015, ISO 14001: 2015, OHAS 18001: 2007, Certificate number 11737. Voluntary certification assisted by a notified body for double walled tanks.

• Welds are made by TUV Rheinland certified welders in accordance with the requirements of standard 9606-2004 and are performed based on the TUV Rheiland certified welding specification and procedures for metallic materials in accordance with the requirements of standard 15614/2004.

• Tank performance is equivalent to model performance Technically Agreement 016-05 / 3746-2018, tested in a testing laboratory accredited by RENAR.

• According to the Technical Approval and following the tests performed by The General Inspectorate for Emergency Situations, the performance criteria for meeting the fundamental fire safety requirement in the construction operation are met.

Free transport to client location is offered.



Flanged Manhole Cover ND600



## Double-walled steel underground tanks



Underground tank with double walls with a capacity of 30,000 l

### Underground steel DIESEL STATION with double walls

- produced according to the European standard EN 12285-1,
- 10 year warranty
- horizontal cylindrical shape with double steel wall,
- 3 " quick-fill nozzle with clamp and lockable lid according to DIN 28 450
- overcharging protection according to EN 13616
- suction nozzle integrated in the lid, equipped with a

valve on the corner with a flap

- leak detection device, according to EN 13160
- level indicator with informative role, dipstick
- vent pipe with flame return device
- anti-corrosion coating and external insulation with epoxy resin, resistant to breakthrough voltage of 6 kV
- the tank is equipped with a Dn 600 manhole with connections.
- mini-counters for manholes,
- metal straps for anchoring on the concrete screed.

Capacity (L)	Dimensions* ( L x l ) cm	Tank diameter (cm) ø	Weight (kg)*
1 000 L	120 x 125	125	520
2000 L	185 x 125	125	675
3000 L	180 x 160	160	890
4000 L	230 x 160	160	1050
5000 L	280 x 160	160	1180
7000 L	400 x 160	160	1500
10.000 L	530 x 160	160	2050
15.000 L	780 x 160	160	3025
20.000 L	660 x 200	200	3800
25.000 L	840 x 180	200	4500
30.000 L	992 x 200	200	5200
40.000 L	860 x 250	250	7030
50.000 L	1060 x 250	250	8000
60.000 L	1280 x 290	290	8458
80.000 L	1270 x 290	290	14.000
100.000 L	1680 x 290	290	17.000

\* the dimensions are indicative and can be modified



## DOUBLE WALLED ABOVE GROUND STEEL TANK



Above ground tank with double walls capacity 20,000 l  
equipped with Piusi pump with 50 users

### Above ground tank with double wall:

#### Characteristics:

- produced according to standard EN 12285-2
- made of carbon steel sheet S 235 JR UNI EN 10025
- horizontal cylindrical shape
- double steel walls - the thickness of the walls is in accordance with the standard
- saddle-type legs, welded
- anti-corrosion coating and paint coating
- DN60 cap with 3 "quick filling nozzle with connection

(quick coupling), lockable from copper

- vent pipe with flame return device
- leak detection device
- level indicator with informative role (dipstick)
- load limiting valve calibrated to 95% of the geometric capacity of the tank
- suction pipe equipped with directional valve (valve antifreeze), filter and valve
- side staircase
- 10 year warranty

Capacity (L)	Dimensions* ( L x l x h ) cm	Tank diameter (cm) ø	Weight (kg)*
5 000 L	390 x 175 x 225	160	1172
10 000 L	520 x 175 x 190	160	2.057
15 000 L	780 x 175 x 190	160	3.025
20 000 L	668 x 215 x 240	200	3.800
30 000 L	995 x 215 x 240	200	5.500
40 000 L	1000 x 265 x 280	250	7.030
50.000 L	813 x 290 x 310	290	9250
60.000 L	964 x 290 x 310	290	10712
80.000 L	1266 x 290 x 310	290	13670
100.000 L	1574 x 290 x 310	290	16590

\* the dimensions are indicative and can be modified

## Single-walled above-ground steel tanks



Single walled above ground steel tank, capacity 9,500 l  
equipped with Cube 56 pump

### Single-walled above-ground steel tank:

Manufactured in accordance with current European regulations, the tank is made of carbon steel sheet S 235 JR UNI EN 10025

Tank features:

- produced in accordance with the European rules in force,
- made of carbon steel sheet S 235 JR UNI EN 10025
- the tank is provided with supports to prevent overturning,
- the tank has a capacity of 50% dim the volume of the tank

- anti-corrosion coating and paint coating
- 400 mm cap with 3 "quick-fill nozzle with lockable quick-connect fitting, made of copper and vent pipe with return device flame,
- level indicator with informative role,
- load limiting valve, calibrated to 95% of the geometric capacity of the tank, the suction pipe equipped with a direction valve (anti-deactivation valve), filter and valve,
- drain pipe at the base of the tank, with safety cover.

Capacity (L)	Dimensions* ( L x l x h ) cm	Tank diameter (cm) ø	Weight (kg)*
1 000 L	150 x 150 x 180	125	450
2 000 L	180 x 140 x 158	125	480
3 000 L	240 x 180 x 200	160	530
3 700 L	240 x 180 x 200	160	530
5 000 L	320 x 175 x 170	160	650
7 000 L	350 x 215 x 230	190	700
9 000 L	390 x 215 x 230	190	1 000
15 000 L	575 x 225 x 240	200	2 000
20 000 L	720 x 225 x 240	200	2 800
25.000 L	720 x 240 x 296	230	3 200
30,000 L	870 x 240 x 296	230	3 500

\* the dimensions are indicative and can be modified

## Containerized Fuel Station

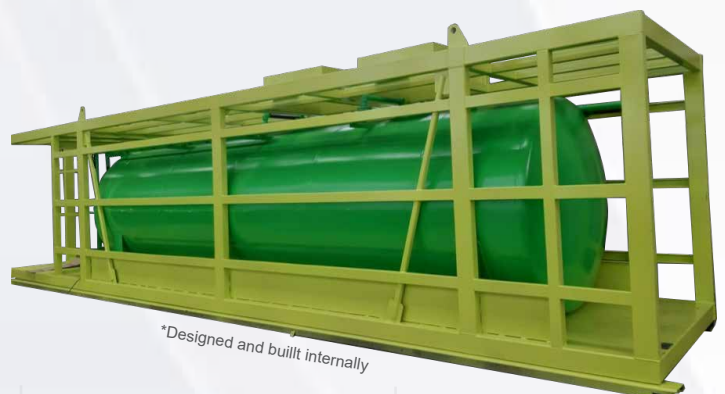


- Designed and build internally by our dedicated design department from Campia Turzii plant,
- Made to order and customizable,
- Build to European Standards,
- Design in accordance with European normative NP 004/2005
- Factory acceptance testing, delivery, installing and commissioning
- Service, mentenance and spare parts replacement

### **The containerized station consists of:**

- Fuel tank, EURIAL, made according to EN 12285 standard,
- Fuel Pump, TATSUNO,
- Shipping container,
- Electronic system for measuring liquid / fuel stock, HECTRONIC, (Optional)
- Transfer pump, (optional),
- Station management system,
- Calibration, graduated ruler and standard vessel - with Metrological Verification Bulletin.

**The stations are customized according to client needs.**



\*pictures shown are for illustration purpose only



## Ad Blue Stations



**The Eurial container station** offers a complete AdBlue storage and distribution solution and is perfectly suitable for petrol stations, logistics companies, construction and transport companies, etc. It is one of the most reliable and robust AdBlue storage systems on the market.

### **Benefits:**

- a compact design;
- a wide range of equipment to suit all types of users;
- easy maintenance;
- secure container protects against unauthorized access;
- 5 year warranty;
- the filling line is provided with a dry coupling filling connection for a safe and easy filling;
- the supply system (dispenser) can be installed separately;
- the exterior design has smooth surfaces that can be easily covered with promotional materials and therefore support marketing.
- clean and closed filling system, which means no odors, vapors, leaks or contamination
- drain mouth compatible with any filling cap to provide a perfect seal and to prevent leakage of the side of vehicles.
- anti-freeze system: AdBlue® freezes at temperatures below -11 ° C. Therefore, Eurial containerized stations have 25 mm thick insulation and thermostat-controlled heating. This allows you to provide your customers with AdBlue® even at low temperatures.

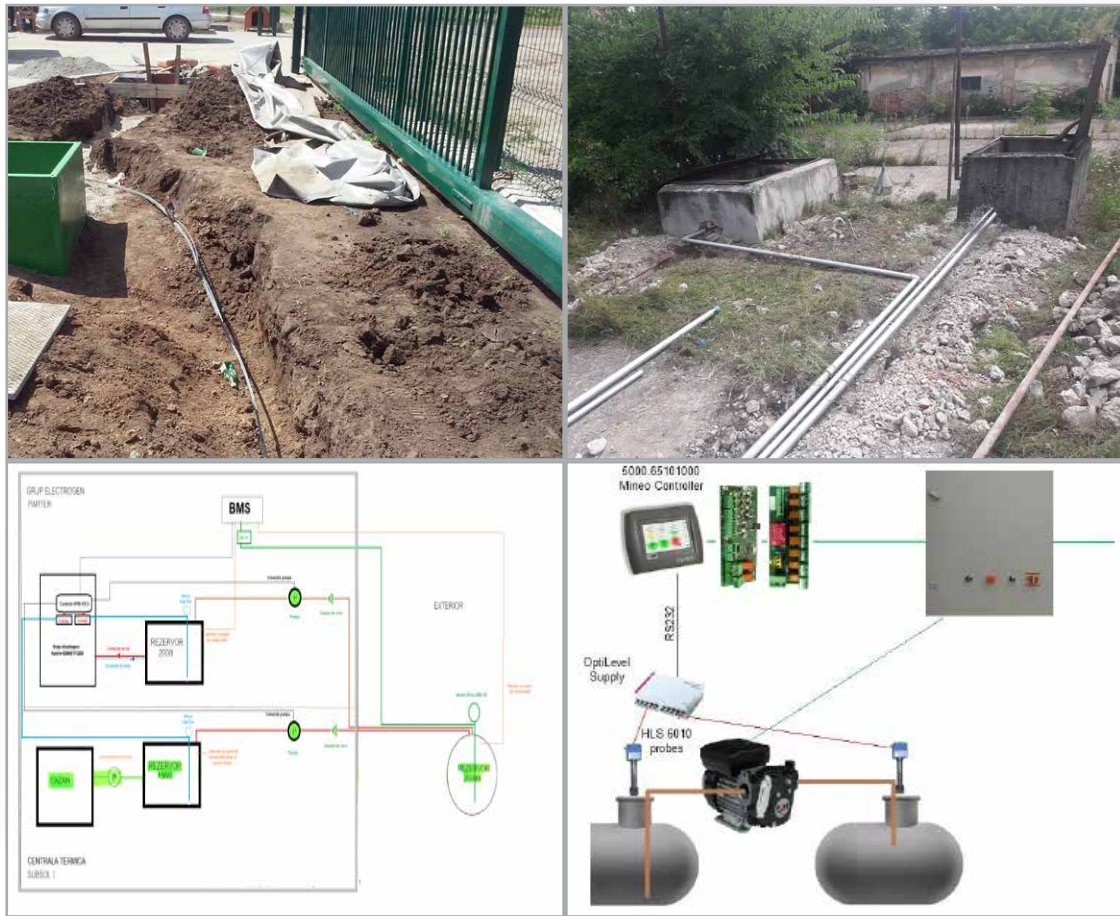
**The stations are customized according to client needs.**



\*pictures shown are for illustration purpose only

## Automation

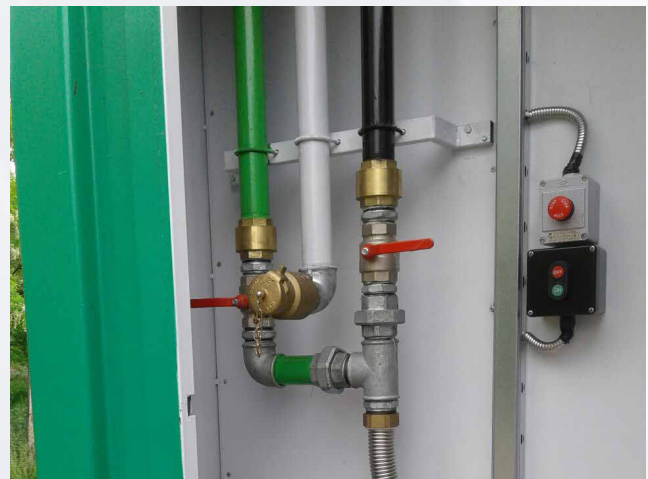
\*pictures shown are for illustration purpose only



\* Automation for generator set and thermal power plant: fuel supply

### Automation:

System consisting of tanks, electric pumps and level probes designed to extend the service life of electric generators and other types of burners. This system is extremely flexible and can be customized to any need or requirement. The system contains a diesel tank (normal capacities between 400 l - 1500 l), a diesel pump transfer and level sensor acting on the pump in cases where the fuel level from the tank is too small or too large. For applications where a quantity of fuel greater than the maximum capacity of tanks (1500 l), up to 5 tanks can be coupled to increase storage space







\*pictures shown are for illustration purpose only

### Technological installations

- Qualified personnel for the design of distribution routes
- Authorized installers for specific works
- Customized solutions according to the specific needs of the customer in accordance with the rules and legislation in force, from the storage tank to that of the customer
- complete solutions for vapor transfer and metering, recovery and disposal using certified technologies
- design and execution of underground and overhead distribution facilities (apparent)



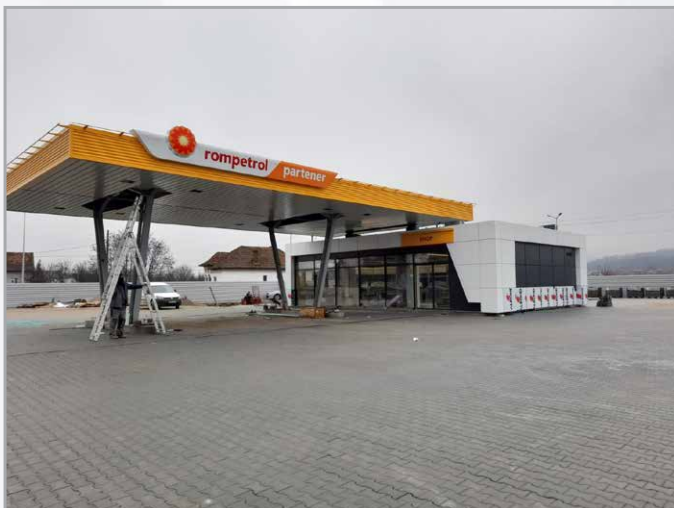
## Petrol stations



\*pictures shown are for illustration purpose only

**The general contractor of the project is provided for the construction of fuel distribution stations with the following:**

- Design of fuel stations and obtaining of approvals
- Monitoring and management
- Infrastructure (foundations, road ceilings)
- Metal structures (awnings, buildings, etc.)
- Technological pipelines
- Signage elements (logos, totem poles, etc.)
- Production of storage tanks
- Calibration and cleaning of tanks
- Fuel distribution pumps
- Oil separators
- Service and maintenance



\*pictures shown are for illustration purpose only



## Tatsuno pumps



Ocean Euro Combi



Tatsuno Tower

**Tatsuno** is a Japanese brand, with an old tradition in the field, produced the first pump in 1919 and one of the top three world manufacturers. It has an impressive market share in Japan of about 60%, because the metrological calibration is done once every 7 years and few manufacturers can meet this requirement. Consequently, the main quality of Tatsuno pumps is RELIABILITY, the hydraulic part of the pumps is considered to be “the best in the world” for which the warranty period is 5 years.

The manufacturer recommends not intervening on the measuring body for a period of 7 years. The degree of wear over time is represented in the graph below: the measurement accuracy over time, related to the increase in the degree of wear. These performances were obtained and are calculated at a consumption of 750,000 l / year / flow meter. The measuring body can be used for 7 years without deviation, without adjustments, without interventions or calibrations.

The pumps can have various flows (40 l / min, 80 l / min or 130 l / min), one or two faces, one or more hoses on each face (max. 5 hoses) and can be of various liquids: diesel, petrol, adblue, windshield fluid, LPG etc.

### ► Multiple Options

- The support is made of galvanized steel, primed and electrostatically painted.
- Stainless steel hose column (AISI 316)
- Detachable panels made of steel painted in two layers, in electrostatic field. In the standard version color White RAL9016. Extraoption of logos, logos, and other colors on request.
- 400 VAC three-phase motor, 50Hz. 220V extra option.
- Pump with measuring body TATSUNO meter with 4 pistons.
- Measurement accuracy  $\pm 0.25\%$



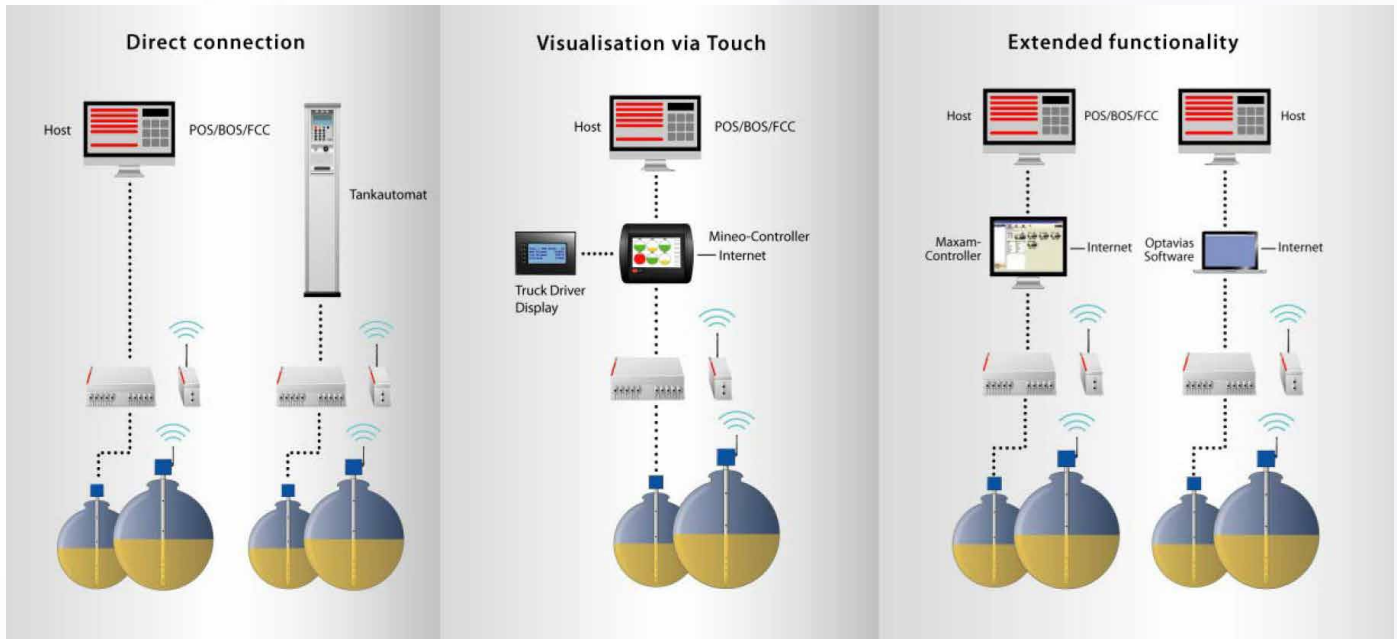
Ocean CNG



Ocean Smart CNG



## Automatic level measuring systems



\*pictures shown are for illustration purpose only

## Automatic level measuring systems

Keep records of the fuel level in your tanks, using our level measuring solutions!

Mechanical, hydrostatic and electronic devices for measuring the fuel level in the tank. These can be from the simplest, with indicative role, to the most complex, which measures both the level and the temperature or even the density of the fuel.

These probes are made of durable materials to ensure high quality solutions and are very accurate. They are available in a range of different sizes. Depending of the products, they can be suitable for all types of fuels, including LPG and AdBlue®.



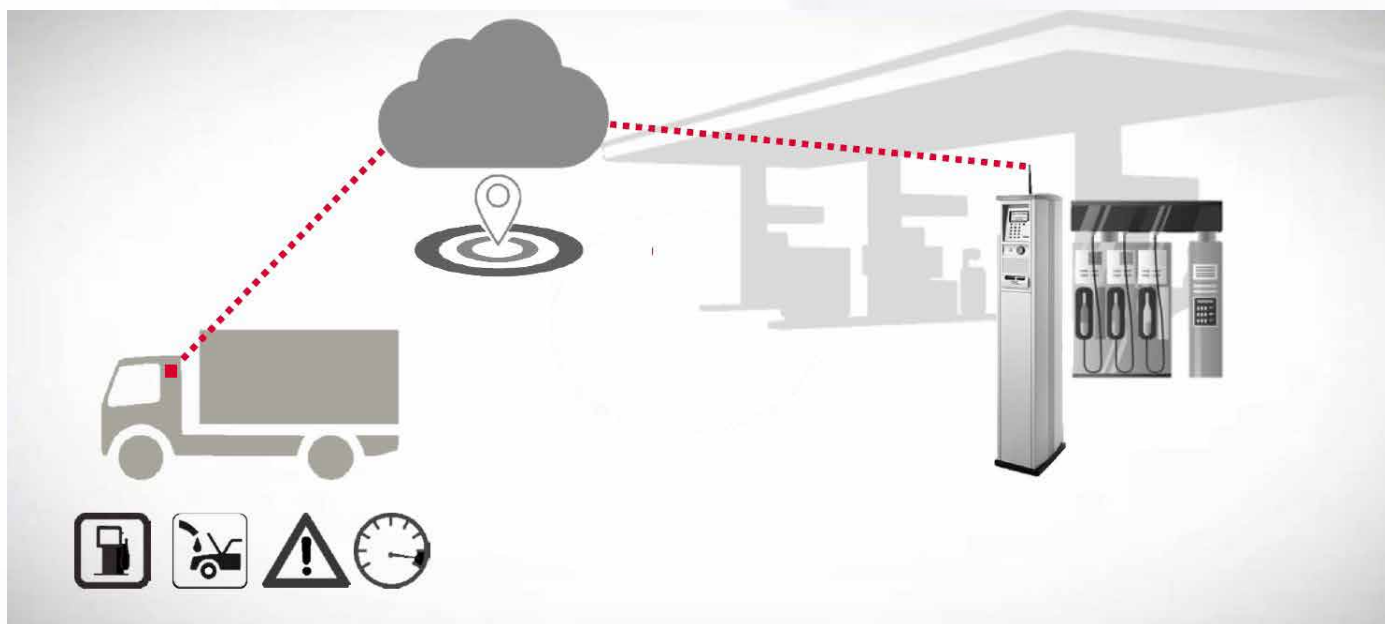
OptiLevel Mineo Controller Touch

### Depending on selected products:

- some devices can be configured to send a message at a defined variation of “n” liters. When a sudden decrease or increase of level in the tank by “n” liters in a given interval is observed, the systems automatically sends an sms alert to selected phone numbers
- With the help of a software program (free) you can follow the level of tanks on the computer. The software saves the history of the tank levels and can graphically display their evolution.
- For reliable continuous level measurement of fuels such as diesel with and without organic content (up 100%), petrol without and with all ethanol components, LPG, AdBlue and a variety of other liquids.
- Some gauge uses proprietary capacitive comparison method systems and does not contain any moving parts (no float).
- suitable for underground and overground industrial and fuel tanks.



## AVR - Automatic vehicle recognition



\*pictures shown are for illustration purpose only

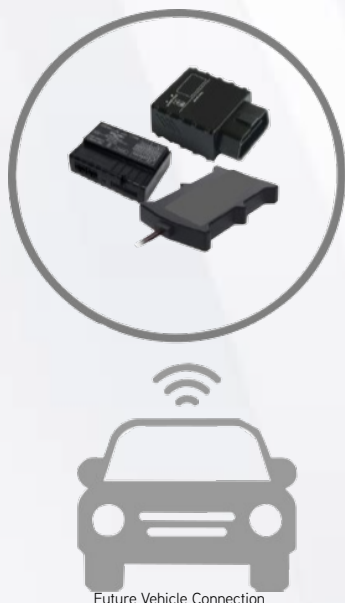
### Automatic vehicle recognition

- Transponder for almost every application
- Easy Installation - glueing, rivets, screwing
- Fast "first" fixation with double-sided adhesive tape
- Security feature
- Very good reading range
- Small design,
- Just for authorization purpose only.
- If the driver takes the nozzle out of the vehicle tank, the fuelling operation is stopped at once (Nozzle-out function)

- Fuel consumption
- Fuel data
- Vehicle Speed
- Maintenance interval
- Oil pressure
- Engine temperature
- Location\*\*
- Total mileage\*\*
- Operating hours\*\*

**\*\* GPS connection required**

**Supported vehicle data (Special options, depending on solution):**



Future Vehicle Connection

### Future Vehicle Connection

- CAN / GNSS / GSM Vehicle modules that send data to Cloud systems;
- Flexible Solutions for different vehicles;
- As little installation effort as possible
- Depending on the vehicle - additional data via CAN bus

# Fuelling your business



The role of Eurial is to find the most efficient solutions for your company. Starting with storage solutions and ending with complex fuel management systems, service, support and maintenance, our team is dedicated and attentive to your company needs. The solutions and products delivered by us meets the highest quality standards. In other words: at Eurial you'll find all the tools you need to develop and to innovate your company.

Str. Becaş, nr. 2, Cod 400478, Cluj-Napoca, RO  
T +40 264 440 446, F +40 364 819 624  
E [office@eurial.com](mailto:office@eurial.com), [www.eurial.com.ro](http://www.eurial.com.ro)